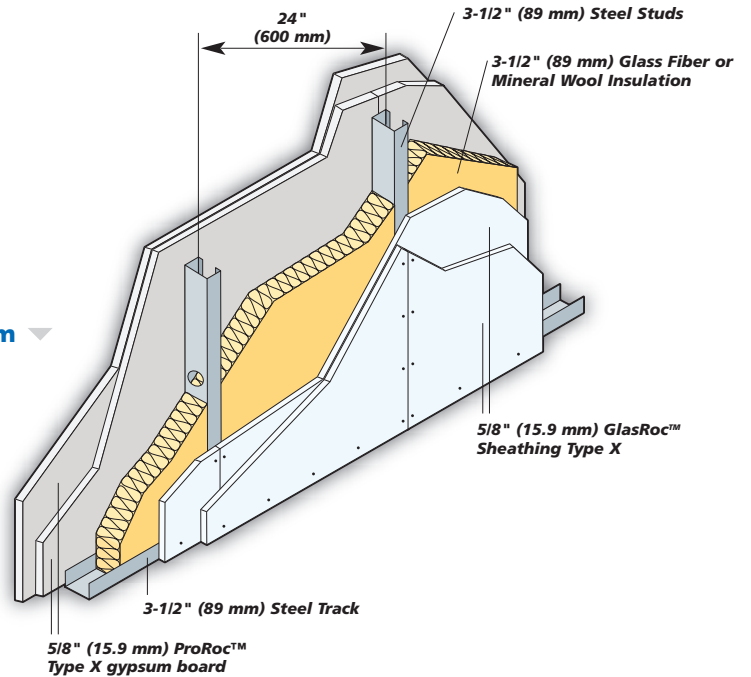


# GlasRoc™ Sheathing Type X Exterior Wall Fire-Rated Systems

Steel Stud System ▼



Reference: UL Design U425  
(Load-Bearing 80% of Design)

## 2-Hour Fire-Resistance Rating

Cavity thickness..... 3-1/2" (89 mm)

Wall thickness ..... 6" (150 mm)

Weight ..... 11 psf (54 kg/m<sup>2</sup>)

## Interior

Install insulation between studs. Apply one layer of 5/8" (15.9 mm) ProRoc™ Type X gypsum board vertically with 1" (25 mm) Type S-12 steel screws spaced 12" (300 mm) o.c. along edges and in the field. Joints must be offset from joints on the opposite side.

Apply a face layer of 5/8" (15.9 mm) ProRoc™ Type X gypsum board vertically with 1-5/8" (41 mm) Type S-12 steel screws spaced 12" (300 mm) o.c. along edges and in the field. Joints must be offset from joints in the underlying layer. Tape and finish joints.

## Exterior

Apply a base layer of 5/8" (15.9 mm) GlasRoc™ Sheathing Type X vertically with 1" (25 mm) Type S-12 steel screws spaced 12" (300 mm) o.c. along edges and in the field. Joints must be offset from joints on the opposite side.

Apply a face layer of 5/8" (15.9 mm) GlasRoc™ Sheathing Type X vertically with 1-5/8" (41 mm) Type S-12 steel screws spaced 12" (300 mm) o.c. along edges and in the field. Joints must be offset from joints in the underlying layer.

## Additional UL Design Listings for Steel Stud Systems:

U017, U418, U420, U421, U422, U434, U442, U450, U460, U466, U467, U473, U475, U487, U494, U501, U502, U504, U505, U506, U510, U512, U603, U615, U617, U622, U623, U626, U640, V417 and V419.