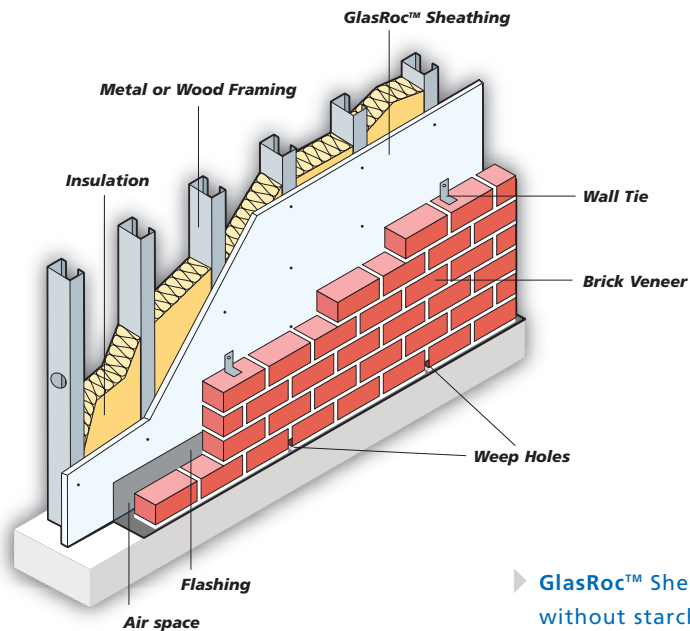


GlasRoc™ Sheathing Exterior Wall Systems



▶ GlasRoc™ Sheathing is manufactured without starches, sugars, paper facing or pulp – and it resists mold and mildew growth when tested in accordance with ASTM D 3273.

07480/09253

Cavity Wall Applications

GlasRoc™ Sheathing offers a protective, smooth, water-resistant application surface which will withstand water penetration into the stud cavity, so a separate weather-resistant barrier may not be necessary, unless required by local code. To best prevent air and water intrusion (when a separate weather resistive barrier is not required by local codes), the joints should be treated with contractor's sheathing tape or exterior caulk (3M 8086 Contractor's Tape or Dow Corning® 795 Silicone Building Sealant). Consult with authority having jurisdiction, prior to installation regarding local requirements.

Installation Recommendations

When installing a brick or stone veneer over GlasRoc™ Sheathing, attach the brick or masonry ties through the GlasRoc™ Sheathing to the structural framing supports. Consult the manufacturer or local building code authority for proper spacing and installation of brick or masonry ties.

Referenced Standards

- ASTM C 514: Specification for Nails for the Application of Gypsum Board
- ASTM C 954: Specification for Steel Drill Screws for the Application of Gypsum Panel Products or Metal Plaster Bases to Steel Studs from 0.33 in. (0.84 mm) to 0.112 in. (2.84 mm) in Thickness
- ASTM C 1002: Standard Specification for Steel Drill Screws for the Application of Gypsum Panel Products or Metal Plaster Bases
- ASTM C 1177: Standard Specification for Glass Mat Gypsum Substrate for Use as Sheathing
- ASTM C 1280: Standard Specification for Application of Gypsum Sheathing
- ASTM E 84: Test Method for Surface Burning Characteristics of Building Materials
- ASTM E 96: Test Methods for Water Vapor Transmission of Materials
- ASTM E 119: Test Method for Fire Tests of Building Construction and Materials