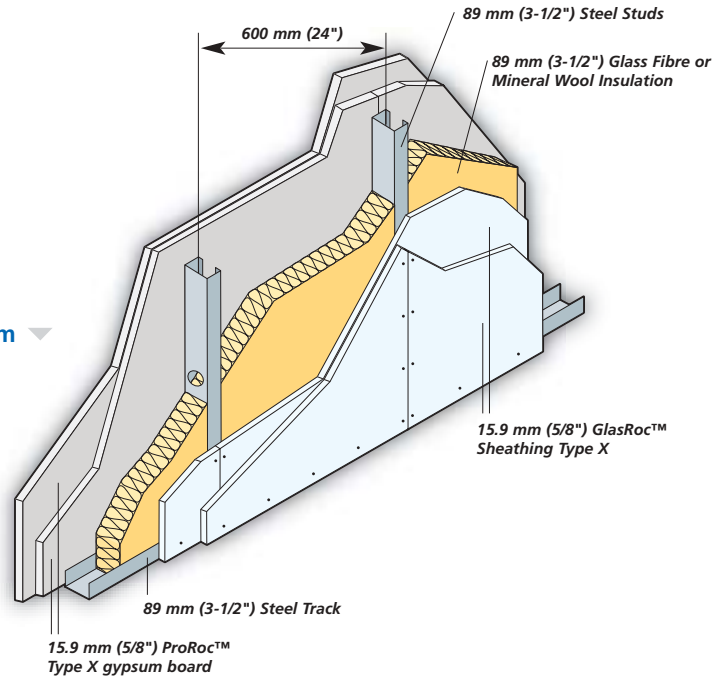


GlasRoc™ Sheathing Type X Exterior Wall Fire-Rated Systems

Steel Stud System



Reference: UL Design U425 (Load-Bearing 80% of Design)

2-Hour Fire-Resistance Rating

Cavity thickness..... 89 mm (3-1/2")

Wall thickness..... 150 mm (6")

Weight..... 54 kg/m² (11 psf)

Interior

Install insulation between studs. Apply one layer of 15.9 mm (5/8") ProRoc™ Type X gypsum board vertically with 25 mm (1") Type S-12 steel screws spaced 300 mm (12") o.c. along edges and in the field. Joints must be offset from joints on the opposite side.

Apply a face layer of 15.9 mm (5/8") ProRoc™ Type X gypsum board vertically with 41 mm (1-5/8") Type S-12 steel screws spaced 300 mm (12") o.c. along edges and in the field. Joints must be offset from joints in the underlying layer. Tape and finish joints.

Exterior

Apply a base layer of 15.9 mm (5/8") GlasRoc™ Sheathing Type X vertically with 25 mm (1") Type S-12 steel screws spaced 300 mm (12") o.c. along edges and in the field. Joints must be offset from joints on the opposite side.

Apply a face layer of 15.9 mm (5/8") GlasRoc™ Sheathing Type X vertically with 41 mm (1-5/8") Type S-12 steel screws spaced 300 mm (12") o.c. along edges and in the field. Joints must be offset from joints in the underlying layer.

Additional UL Design Listings for Steel Stud Systems:

U017, U418, U420, U421, U422, U434, U442, U450, U460, U466, U467, U473, U475, U487, U494, U501, U502, U504, U505, U506, U510, U512, U603, U615, U617, U622, U623, U626, U640, V417 and V419.