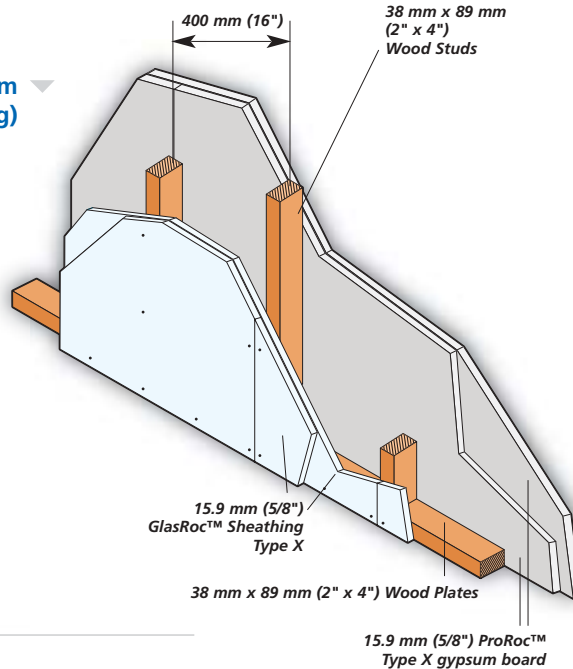


GlasRoc™ Sheathing Type X Exterior Wall Fire-Rated Systems



Wood Stud System
(Load-Bearing)



Reference: UL Design U301

2-Hour Fire-Resistance Rating

Cavity thickness..... 89 mm (3-1/2")

Wall thickness..... 152 mm (6")

Weight..... 59 kg/m² (12 psf)

Interior

Apply a base layer of 15.9 mm (5/8") ProRoc™ Type X gypsum board vertically or horizontally with 48 mm (1-7/8") nails spaced 150 mm (6") o.c. along edges and in the field. Joints must be offset from joints on the opposite side. Vertical joints must be located over framing members.

Apply a face layer of 15.9 mm (5/8") ProRoc™ Type X gypsum board vertically or horizontally with 60 mm (2-3/8") nails spaced 200 mm (8") o.c. along edges and in the field. Joints must be offset from joints in the underlying layer. Tape and finish joints.

Exterior

Apply a base layer of 15.9 mm (5/8") GlasRoc™ Sheathing Type X vertically or horizontally with 48 mm (1-7/8") nails spaced 150 mm (6") o.c. along edges and in the field. Joints must be offset from joints on the opposite side. Vertical joints must be located over framing members.

Apply a face layer of 15.9 mm (5/8") GlasRoc™ Sheathing Type X vertically or horizontally with 60 mm (2-3/8") nails spaced 200 mm (8") o.c. along edges and in the field. Joints must be offset from joints in the underlying layer. Tape and finish joints.