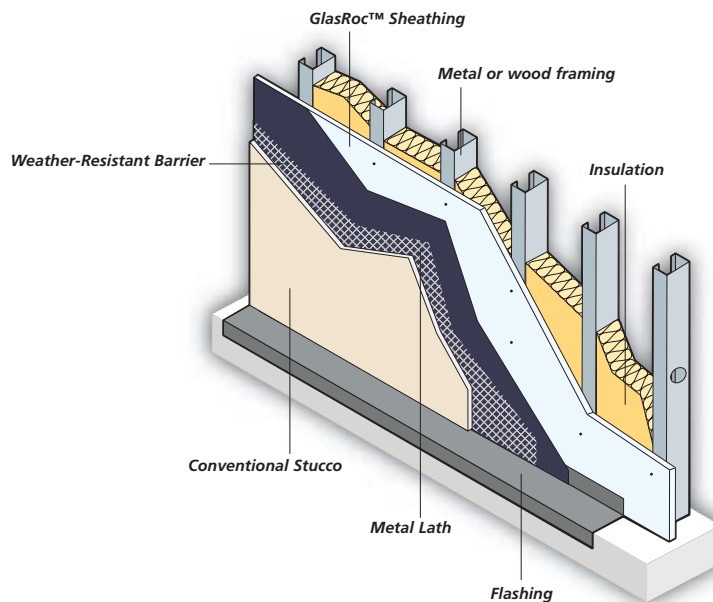


# GlasRoc™ Sheathing Exterior Wall Systems



07480/09253

## Conventional Stucco Applications

GlasRoc™ Sheathing's integral coated surface with its high surface bond strength provides an excellent water-resistant surface for conventional stucco applications. The treated core adds to the water-resistive performance of the product. Conventional stucco systems rely on the structural soundness of the sheathing component to which they are applied. GlasRoc™ Sheathing offers physical properties superior to competitive gypsum sheathing products in the market. It is manufactured to meet or exceed the physical property requirements outlined in ASTM C 1177.

### Installation Recommendation

In a conventional stucco system, metal lath or other specified self-furring components should be attached to the

framing members through the GlasRoc™ Sheathing, after the appropriate flashing is installed. Always use appropriate joint treatment (Contractor's Sheathing Tape or Building Sealant) when required. Apply the stucco, as recommended by the manufacturer.

### Referenced Standards

- ASTM C 514: Specification for Nails for the Application of Gypsum Board
- ASTM C 954: Specification for Steel Drill Screws for the Application of Gypsum Panel Products or Metal Plaster Bases to Steel Studs from 0.33 in. (0.84 mm) to 0.112 in. (2.84 mm) in Thickness
- ASTM C 1002: Standard Specification for Steel Drill Screws for the Application of Gypsum Panel Products or Metal Plaster Bases
- ASTM C 1177: Standard Specification for Glass Mat Gypsum Substrate for Use as Sheathing
- ASTM C 1280: Standard Specification for Application of Gypsum Sheathing
- CAN/ULC-S102 / ASTM E 84: Test Method for Surface Burning Characteristics of Building Materials
- ASTM E 96: Test Methods for Water Vapour Transmission of Materials
- CAN/ULC-S101 / ASTM E 119: Test Method for Fire Tests of Building Construction and Materials